

PETRA

Self Catering Holidays In Marazion

Petra is conveniently situated in the heart of Marazion a traditional Cornish Market Town. Marazion is famed as the departure point for internationally famous St Michael's Mount.

Petra is situated within a Grade II listed building above the beautiful and unique Seagrove Art Gallery. Located only a short flat walk to all local amenities which include, beaches, chemist, cash machine, general stores, post office, bakery, cafés, public houses, art galleries and antique shop.

Marazion makes an ideal base for visiting the rest of Penwith. This opens up even more recreational opportunities, such as walking the Cornish Coastal Path so enjoying the spectacular Cornish coastline of cliffs and remote coves. Visit the prehistoric sites for which this part of Cornwall has one of the highest concentrations in the country. With so much available, many of our guests discover that they need more than one holiday to fit everything in. With so many activities and places to visit there is sufficient to suit all tastes.

Petra is only one minute walk from the causeway that leads to the internationally renowned St Michael's Mount. The causeway is uncovered at low tide. When covered by the tide ferry boats are available.

There are numerous activities nearby including a museum and sailing club. The long gently sloping sandy beaches are ideal for beach lovers. Here on offer is kite surfing, wind surfing and sailing. On the outskirts of Marazion is Marazion Marsh a RSPB reserve. The reserve is open at all times and is renowned for its birdlife.

Marazion is served by a good bus service. There is a traffic free cycle path across the top of the beach, which one can follow to Penzance.



Flats Located Above Seagrove Gallery



Causeway leading to St Michael's Mount

Ian & Sandra Seagrove
Seagrove Gallery, The Square, Marazion, Cornwall, TR17
0BH
Tel +44 (0)1736 710732
Tel +44 (0)1736 762228 Evenings
email:petra@marazionholidays.co.uk

Non-Smoking Establishment



FLAT 1

THE PROPERTY OFFERS:

Wide entrance passage leading to;

Lounge/Diner with breathtaking views over St Michaels Mount. The room includes four seater dining table, comfortable sofa, T.V. Video and C.D. player.

Master Bedroom with kingsize bed.

Second Bedroom with two twin divans.

Bathroom with luxury corner bath and shower overhead, shaver socket, wc and washbasin. Hot water 24/7.

Well equipped Kitchen off the Lounge, with built under cooker, microwave, iron, ironing board, toaster, fridge, extractor, crockery, cutlery, cooking utensils, hob, washing machine and combi central heating boiler.

Car Parking, close to the flat.

Central Heating optional.

Cleanliness is assured, every effort being made to ensure a pleasant and relaxing stay.



View from window overlooking St Michaels Mount

TARIFF: We are open all year, our prices ranging from £ 330 in the low season to £ 680 in the high season.



Twin divan Bedroom



Double Divan Bedroom



Lounge From Kitchen



Lounge



Kitchen from Lounge



Bathroom

Non-Smoking Establishment



FLAT 2

THE PROPERTY OFFERS:

Entrance passage leading to;

Lounge/Diner with breathtaking views over St Michaels Mount. The room includes 3 seater dining table, comfortable sofa, LCD TV & DVD player.

Bedroom with a four poster Kingsize bed.

Well equipped Kitchen with built under cooker, microwave, iron, ironing board, toaster, fridge, extractor, crockery, cutlery, cooking utensils, hob, washing machine, and combi central heating boiler.

Bathroom with bath and shower overhead, shaver socket, wc and washbasin. Hot water 24/7.

Car Parking, close to the flat.

Central Heating optional.

Cleanliness is assured, every effort being made to ensure a pleasant and relaxing stay.

TARIFF:

We are open all year, our prices ranging from £ 310 in the low season to £ 620 in the high season.



Dining Area



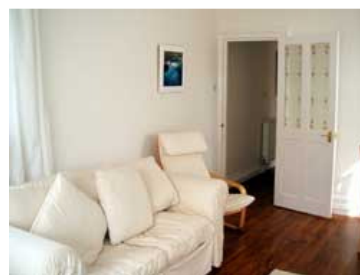
Kitchen



Four Poster Kingsize Bed



Lounge window overlooking St Michaels Mount & Mounts Bay



Lounge

Location

DIRECTIONS:

On the A30 after leaving Crowlas, at the roundabout take the second exit which is signposted Marazion.

Bear right onto Newton Lane.

Bear left onto Local Road

Continue on this road and you will enter Marazion.

Bear right onto West End,

Turn left into The Square

The Seagrove Gallery is situated in the Square between Godolphin Arms and the Marazion Hotel.



Conditions Of Holiday Letting

1. A 25% deposit, with balance due 4 weeks before holiday commences.
2. Bookings run from 2pm SATURDAY UNTIL 10am SATURDAY.
3. Any breakages or damage to be paid for.
4. Linen supplied.
5. Please leave clean and tidy.
6. Please make your cheques payable to I.C.Seagrove.
7. Each flat has it's own electric slot meter which accepts £1 coins.
8. We operate a strict non-smoking policy in the Flats.

We regret that we cannot accommodate pets.

Tariffs

TARIFF: Flat 1 (2 bed) For 2012 Prices Are Per Week

- January	To	31	- March	£330 h
31 - March	To	07	- April	£440 h
7 - April	To	14	- April	£490 h
14 - April	To	19	May	£440
19 - May	To	26	- May	£460
26 - May	To	02	- June	£500
02 - June	To	23	- June	£480
23 - June	To	30	June	£560
30 - June	To	14	- July	£620
14 - July	To	25	- August	£680
25 - August	To	01	- September	£520
01 - September	To	08	- September	£460
08 - September	To	15	- September	£440
15 - September	To	22	- September	£410
22 - September	To	13	October	£390 h
13 - October	To	22	- December	£390 h
22 - December	To	29	- December	£540 h

H after the amount means heating included, otherwise add £35 for heating

Tariffs

TARIFF: Flat 2 (1 bed) For 2012 Prices Are Per Week

- January	To	31	- March	£310 h
31 - March	To	07	- April	£410 h
7 - April	To	14	- April	£440 h
14 - April	To	19	May	£410
19 - May	To	26	- May	£430
26 - May	To	02	- June	£480
02 - June	To	23	- June	£460
23 - June	To	30	June	£540
30 - June	To	14	- July	£590
14 - July	To	25	- August	£620
25 - August	To	01	- September	£500
01 - September	To	08	- September	£420
08 - September	To	15	- September	£400
15 - September	To	22	- September	£380
22 - September	To	13	October	£360 h
13 - October	To	22	- December	£360 h
22 - December	To	29	- December	£520 h

H after the amount means heating included, otherwise add £35 for heating